



# Plusline Small

## Plusline S 200W R7s 230V 1CT/10X10F

Mains-voltage linear lamp giving white halogen light

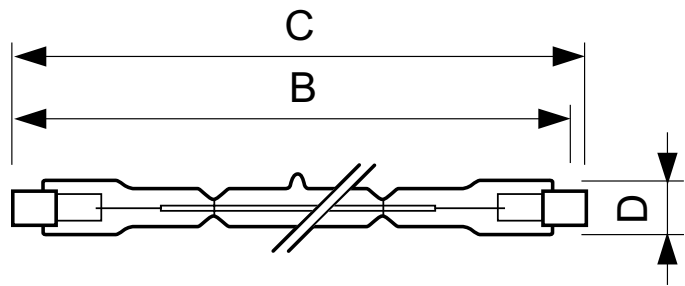
### Product data

General Information	
Cap-Base	R7S [ R7s]
Operating Position	UNIVERSAL [ Any or Universal (U)]
Nominal Lifetime (Nom)	2000 h
Light Technical	
Luminous Flux (Nom)	3000 lm
Correlated Color Temperature (Nom)	2900 K
Luminous Efficacy (Rated) (Nom)	15 lm/W
Color Rendering Index (Nom)	100
Operating and Electrical	
Power (Rated) (Nom)	200 W
Lamp Current (Nom)	0.87 A
Starting Time (Nom)	0.0 s
Voltage (Nom)	230 V
Controls and Dimming	
Dimmable	Yes
Mechanical and Housing	
Bulb Finish	Clear

Approval and Application	
Energy Efficiency Label (EEL)	E
Luminaire Design Requirements	
Bulb Temperature (Max)	900 °C
Pinch Temperature (Max)	350 °C
Product Data	
Full product code	872790080909100
Order product name	Plusline S 200W R7s 230V 1CT/10X10F
EAN/UPC - Product	8727900809091
Order code	924735744201
Numerator - Quantity Per Pack	1
Numerator - Packs per outer box	100
Material Nr. (12NC)	924735744201
Net Weight (Piece)	0.010 kg
ILCOS Code	HDG//RS-200-230-R7s-114,2

Plusline Small

Dimensional drawing



Product	D (max)	B (max)	B	B (min)	C (max)
Plusline S 200W R7s 230V 1CT/10X10F	12 mm	115.8 mm	114.2 mm	112.6 mm	117.6 mm

DESmall 200W R7s 230V T3 CL

